



TC1-S Tension Load Cells

Delivers a high-accuracy weighing system for suspended in-process vessels

TECHNICAL SPECIFICATIONS



The TC1-S Tension Load Cell is a tension cell that delivers a high-accuracy weighing system for suspended in-process vessels. The TC1-S has no moving parts to wear out or fall out of adjustment. It is also waterproof making it ideal for outdoor as well as indoor applications.

The TC1-S tension cell is designed for industrial scale measurement of inventory and process applications. Construction is alloy steel with nickel plate for high accuracy and corrosion resistance and is fully sealed to IP67 rating.

Mounting kits and accessories are available. See Mounting Kit and Accessories specifications.

FEATURES AND BENEFITS

Alloy Tool Steel Construction

Provides high accuracy weighing for suspended vessels.

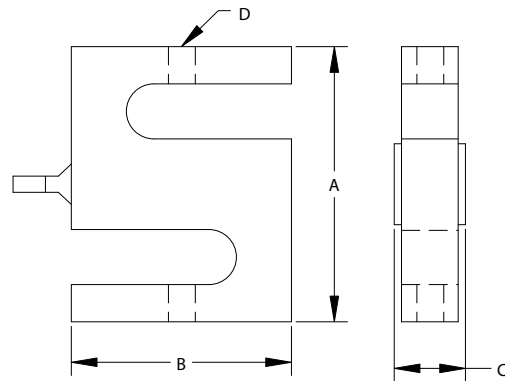
Electroless Nickel Plated Alloy Steel

For corrosion resistance.

Fully Sealed to IP67

Waterproof for outdoor and indoor applications.

NTEP Certified



Capacity/Dimensions

Model	Rated Capacity	A	B	C	D
TC1-0.11K	110lbs/ 50kg	2.5 in. (63.5mm)	2.0 in. (50.8mm)	.50 in. (12.7mm)	M6 X 1P
TC1-0.22K	220lbs/ 100kg				
TC1-0.44K	440lbs/ 200kg	3.0 in. (76.2mm)	2.0 in. (50.8mm)	.75 in. (19.0mm)	M12 X 1.75P
TC1-01.1K	1100lbs/ 500kg				
TC1-02.2K	2200lbs/ 1T	3.0 in. (76.2mm)	2.0 in. (50.8mm)	1.0 in. (25.4mm)	M12 X 1.75P
TC1-04.4K	4400lbs/ 2T	4.25 in. (108mm)	3.0 in. (76.2mm)	1.25 in. (32.0mm)	M20 X 1.5P

WIRING INFORMATION

RED :EXC.(+) WHITE :EXC.(-)
 GREEN :SIG.(-) BLUE :SIG.(+)
 BARE :GND

SPECIFICATIONS

FUNCTIONAL	
Functional Integrity	± 150% of rated capacity
Mechanical Integrity	± 300% of rated capacity
Excitation Voltage - Standard	10 VDC
Excitation Voltage - Maximum	15 VDC
Input Resistance	350 ± 3.5 ohms
Insulation Resistance	> 2000 m ohms
PERFORMANCE	
Non-linearity	< 0.03% of rated output
Hysteresis	< 0.03% of rated output
Non-repeatability	< 0.02% of rated output
Creep (after 20 minutes)	0.03% of rated output (determined at rated capacity; performance at reduced loads proportional to applied load)
Nominal Output	3 mV/V ± 0.5%
Zero Balance	< 1% of rated output
Output Resistance	350 ± 5 ohms
PHYSICAL	
Temperature Range	Operational: -65° to 200° F (-20° to 80° C)
	Compensated: 0° to 150° F (-10° to 70° C)
	Rated Output: < 0.1% of rated output/10° C
	Zero Shift: < 0.05% of rated output/10° C
PHYSICAL	
Construction	Electroless nickel-plated steel
Cable	4-connector shielded cable (AWG22); 10 ft (3 m) long
Environmental Protection Rating	IP67
Shipping Weight	1 to 4 lbs